

MAXLITE



the **Maximum**
in Lightweight Comfort & Style



ML-29BHGS
Onyx Interior

MAX PAC OPTION

- 13.5 A/C ducted
- AM/FM CD stereo/4 speakers
- Awning
- TV antenna/cable
- Microwave



ML-24RS
Forrest Green



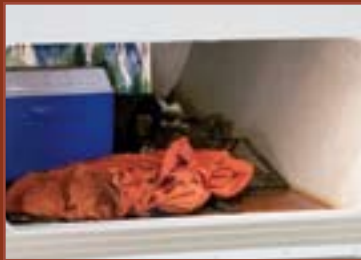
ML-28BHS
Shadow Blue Interior

MEGA MAX PAC OPTION

- Oval mirror
- Wall border
- Shower curtain
- Bathroom accessories
- Coat hooks
- Utensil rack
- Deluxe mattress
- Bedspread
- LP/bottle cover
- Chrome bumper cover
- Raised panel refer insert
- Catch all tray
- Recessed cutting board
- Paper towel holder
- Laundry hamper



"Accu-Slide" power slides are lightweight, heavy-duty, and self-locking in the "in" and "out" positions with smooth even operation.



You will enjoy the large pass-thru storage with a convenient light. Pack it with all your camping needs.



5" roof truss with ducted AC and walkable decking



40 gallon tanks are enclosed below the floor in the heated underbelly.

MAX LITE SPECIFICATIONS

Construction

- 8" I-beam with cross members and outriggers
- Leaf spring equalizing suspension system, Easylube hubs
- Heated enclosed underbelly and tanks
- 2" Aluminum framed laminated floor
- 1-1/2" Aluminum framed laminated fiberglass walls with "Filon Plus" (all walls.)
- Power Accu-Slide system on all slides
- Safety glass is standard in all windows
- Ducted A/C
- Under-the-floor heat ducts with floor registers
- 205-14" Trailer tires
- 40 Gal. fresh water tank enclosed below the floor
- Large pass-thru storage on most models
- Truss roof with walkable decking
- Rubber roof

Electrical

- 55 amp power converter
- Hitch light
- Trunk light
- Patio light
- Dual battery brackets

Appliances/Equipment

- 2 Door refrigerator
- 6 Gal. water heater
- 3 Burner range
- Monitor panel
- 30 lb. LP bottles
- Outside shower
- Bypass kit
- 30,000 BTU Furnace

Bath

- Power roof vent
- Skylight over tub
- 40 Gal. holding tanks
- Linen closet with 4-shelves

Interior

- Vinyl wood flooring
- Harmony white cabinets
- Radius galleys with laminated tops
- Picture window at the dinettes
- Residential wood side drawers with drawer guides
- Designer style box valances
- Carpet in bedrooms
- High-rise faucet in galley

- Large galley sink
- Residential style cabinet doors with raised panels
- Large overheads
- Upholstered headboard
- Three interior decors - shadow blue, forest green or singular onyx

Travel Trailer Options

- 15,000 Ducted A/C (must include Max Pac)
- 14" Spare tire w/ABS cover
- 2 Security lights
- 4 Stabilizer jacks with sand pads
- 6 Gal. gas/electric DSI water heater
- Bar stool(s) (x2 each; 27FL, 28RL, 29RL)
- Chair(s) (x1 each; 28FK)
- Gas oven
- Ladder (N/A on rear slide models)
- Outside cook center (N/A on 26RK, 28FK, 27BHGS or 29BHGS)
- Pull-out pantry (N/A on 26RK or 28FK)
- Tub surround (neo-angle shower and surround standard on 29RL)
- Equa Flex suspension
- 15" LCD/DVD TV

GENERAL WARRANTY INFORMATION

Rubber roof.....	12 years	Suspension system.....	2 years
Fiberglass skin.....	2 years	General camper coverage.....	1 year
Chassis.....	2 years	Atwood appliances.....	2 years
Lamination.....	2 years	Norcold appliances.....	2 years

*See dealer for complete coverage.

"Quality Features for the Best Value in the Market"



Our 58 acre complex in Warsaw, Indiana

Your Dealer:

R-Vision, Inc.

2666 S. Country Club Drive
Warsaw, IN 46580
(574) 268-2111

www.trail-lite.com

As R-Vision constantly strives to improve our product, all specifications listed in this informative brochure are subject to change without notice or obligation. Photos may show optional equipment which is not included in the purchase price of the unit. Test drive and review a current model on your dealer's lot today.
R-80-096 2007 R-Vision, Inc.